

*Confidential - For official use only*

## COMPARISON OF LITHOLOGY AND OIL SHALE ASSAY

Sindair Oil & Gas Company  
Gilsonite Draw Unit No. 1

Location 1500 FEL - 1500 FSL  
Sec. 16-T10S-R1E  
Duchesne County, Utah

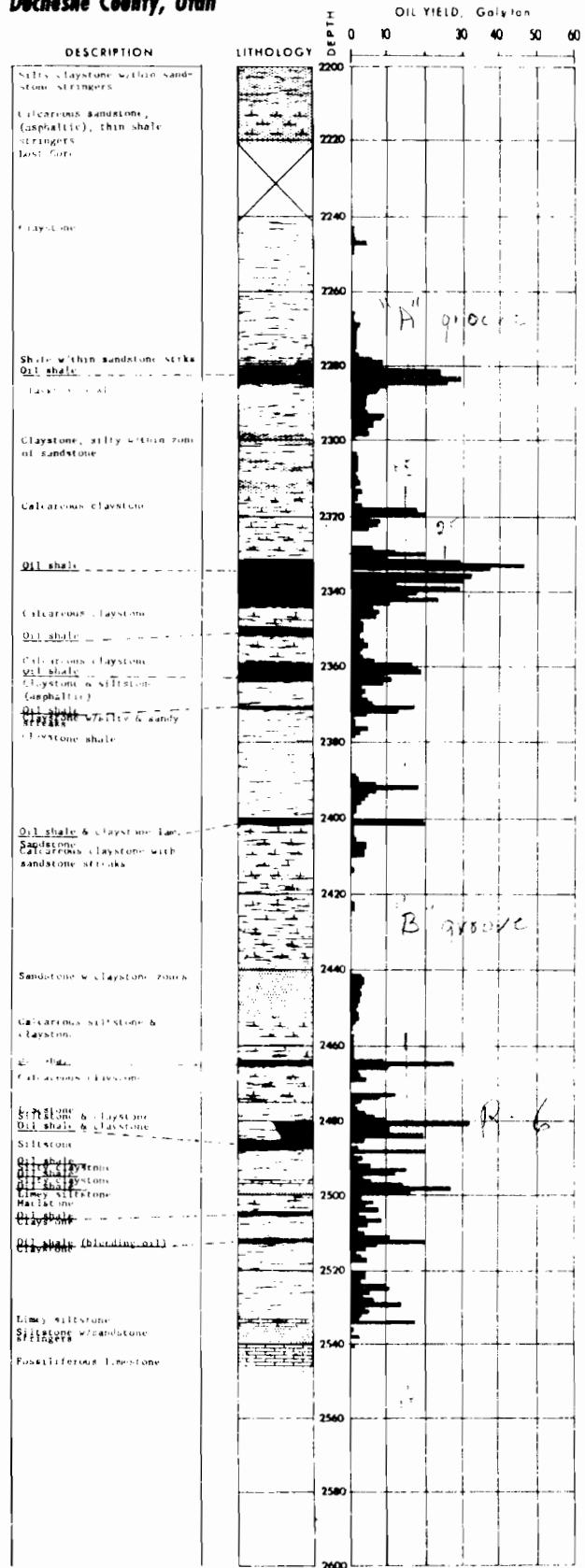
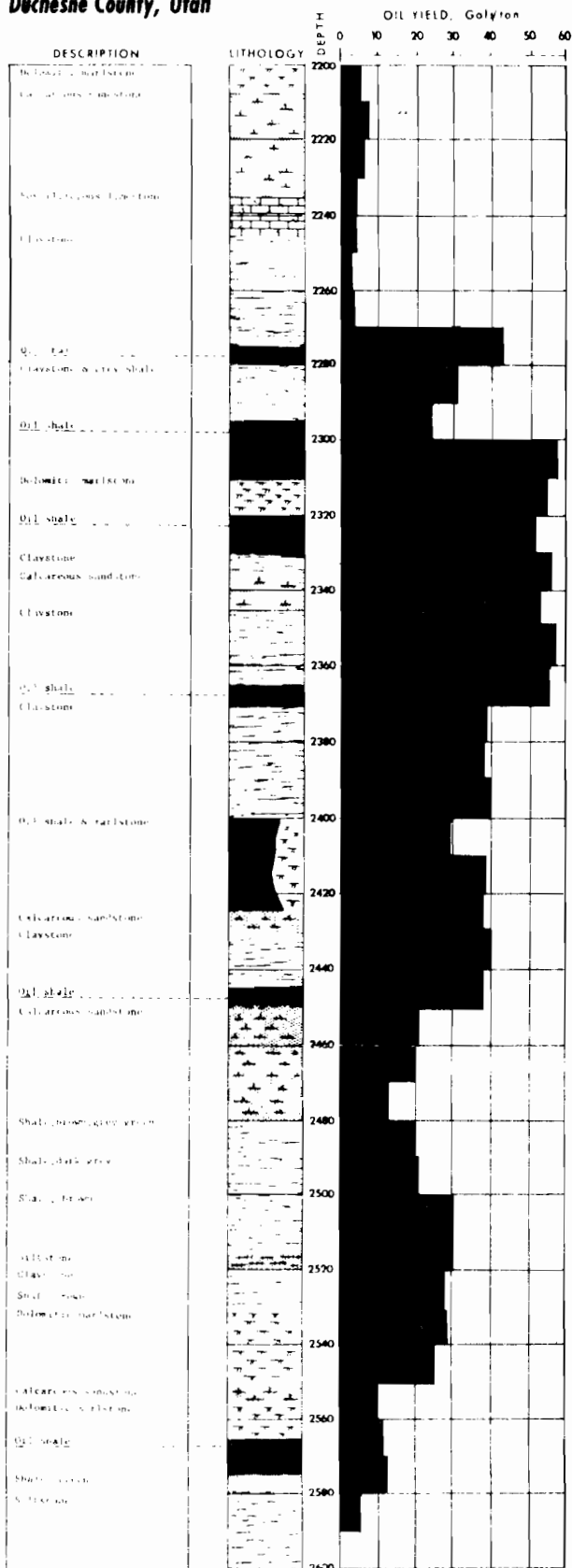
*transferred*

Henderson No. 3

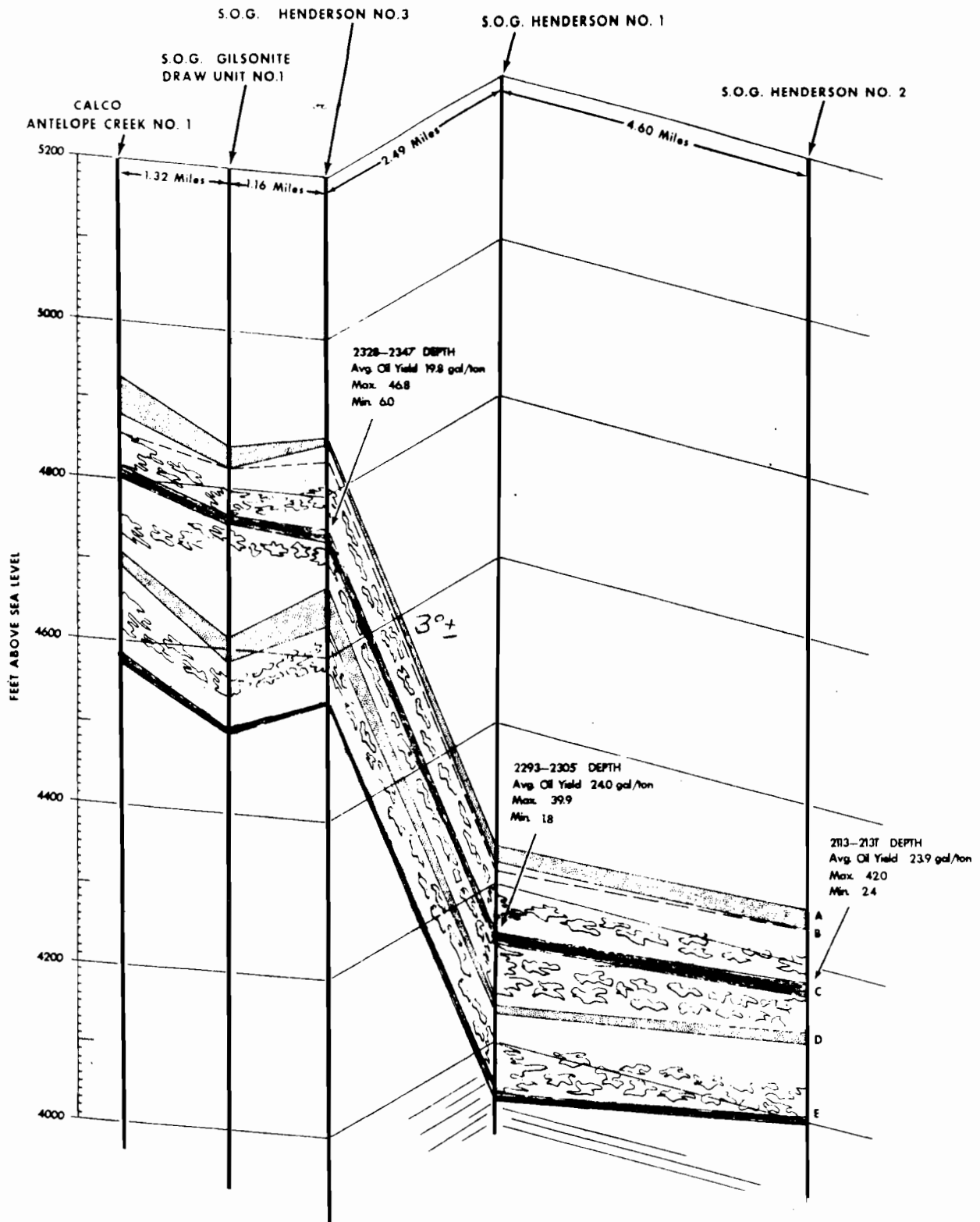
Sindair Oil & Gas Company  
Henderson No. 3

Location NWNW  
Sec. 20-T6S-R3W  
Duchesne County, Utah

*this is location of Gilsonite Draw*



# Cross Sectional View Oil Shale Area Duchesne County, Utah



- A - Sandstone bench above oil shale
- B - Geologist's top, 'Main Oil Shale Zone'
- C - Richest oil shale section
- D - Middle sandstone bench
- E - Limestone marker, bottom of 'Main Oil Shale Zone'

PLATE 3